



resilience

resilience

Dear Friends:

It is impossible to reflect on 2021 without thinking of resilience.

Northern Virginia has been resilient in the face of many challenges. Our local economy has adapted under pandemic related pressures. Our social and safety net structures have held and even expanded their relief efforts. Our local governments supported those most adversely impacted by the virus with new and innovative programs.

Community resilience is complex and hard to define. But surely it reflects the ties that bind and their growing strength across jurisdictions, sectors, faiths, races, ethnicities, and class. It reflects efforts by local institutions of renewal to heal our civic and social rifts. And it reflects an increased willingness to listen, learn, and respond to the invitation that our shared humanity extends.

During the past year, the Community Foundation launched Build Back - Dream Forward, an initiative that featured events and investments dedicated to community resilience. Throughout the initiative we conducted community conversations with prominent leaders to examine why the pandemic was causing such disproportionate economic impacts on communities of color and immigrant communities. We partnered with local economic development authorities to provide coaching, mentoring, and other support services for a

regional cohort of immigrant and Black and brown owned businesses. We authored and published a seminal data driven report by Insight Region™ called “Supporting Minority Owned Businesses in Northern Virginia” that revealed surprising new data on the number and economic impact of these businesses. And we awarded a record level of support for our neediest, most vulnerable neighbors.

There is much yet to do. We have all been saddened and made weary by the virus and its terrible impacts. But we have also found a quality of strength and inspiration in each other that has refueled and reanimated our purpose.

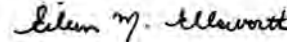
Every page of this annual report reflects the gift of community resilience, a generous donor base, an abiding desire to help, and a growing capacity to do so. We hope you enjoy it.



Bernard Mustafa
Chair of the Board
of Directors



Eileen Ellsworth
President and CEO



ABOUT THE COMMUNITY FOUNDATION FOR NORTHERN VIRGINIA

Founded in 1978, the Community Foundation has been the premier charitable partner trusted by thousands of generous Northern Virginians for decades. Our mission is to grow local philanthropy to respond to need, seed innovation and lead and convene the community. Comprised of donor advised funds, permanent funds, giving circles, and other charitable endowments, the Community Foundation works to create lasting change for our region.

OUR VALUES

The Community Foundation for Northern Virginia is committed to building a community that works for everyone.

Our community is stronger when all people are respected, welcomed, and invited to share their assets and contributions in community building.

We work to bring about a more equitable and inclusive prosperity that marries our economic strength with the full breadth of our diverse community.

We are wholeheartedly devoted to our neediest neighbors and most vulnerable and marginalized populations, and work tirelessly to better meet their needs.

Now, more than ever, we see many opportunities for local action.

We do nothing alone at the Community Foundation. Please join us in grant making, dialogue, outreach and advocacy.



TABLE OF CONTENTS

Community Foundation for Northern Virginia at a Glance 2-3

Blueprint for Community Leadership 4-5

Insight Region..... 6-7

Build Back - Dream Forward 8-9

Events & Convenings 12-13

Community Investments 14-19

Scholarships 20-24

Permanent Fund for Northern Virginia 25

Funds at the Foundation..... 26-29

Foundation Supporters..... 29-35

Financials 36-37

2020-2021 BOARD OF DIRECTORS & STAFF

Board of Directors

Bernard Mustafa (Chair)
BeFIT Technologies

Catherine Schott Murray (Vice-Chair)
Odin, Feldman & Pittleman, PC

Marc Wishkoff (Secretary)
Chevy Chase Trust

Helaine Weissman (Treasurer)
PB Mares

Cindy Andreotti
The Andreotti Group, LLC

Dave Armstrong
Monument Wealth Management

Brandon Elledge, Esq.
Holland & Knight LLP

Anita Gupta
KiwiTech

Cheryl Janey
Moorewood Partners, LLC

Robert Kipps
Kipps DeSanto & Co.

Harry Klaff
Avision Young

Karen McWilliams
SAIC

Melinda Merk
McCandlish Lillard, PC

Susan Nolan

Richard Pineda
CALIBRE Systems, Inc.

Julie Simmons
Human Capital Strategic Consulting

K. Paul Singh
Rezon8Capital & Advisory Group

Josh Stillman
Capitol Financial Consultants

Mitch Weinbraub
Cordia Partners

George Wilson
ECS Federal, Inc.

John Wolff
Wealthspire Advisors

Staff

Eileen Ellsworth
President and CEO

Jennifer Cochran
Manager of Grants and Scholarships

Josiah Day
Director of Development

Cindy DiMarco
Director of Finance

Tara Nadel
Vice President of Marketing and Events

Sari Raskin
Vice President of Grants and Community Leadership

Moses Ulom
Gifts and Grants Administrator

Stephanie Valdes
Director of Donor Relations

Marcus Wilson
Manager of Communications and Events



COMMUNITY FOUNDATION FOR NORTHERN VIRGINIA at a glance

GIVING & INVESTING



\$89,074,533 asset base
\$8,777,965 contributions
1,253 contributors
247 donor funds

COMMUNITY LEADERSHIP



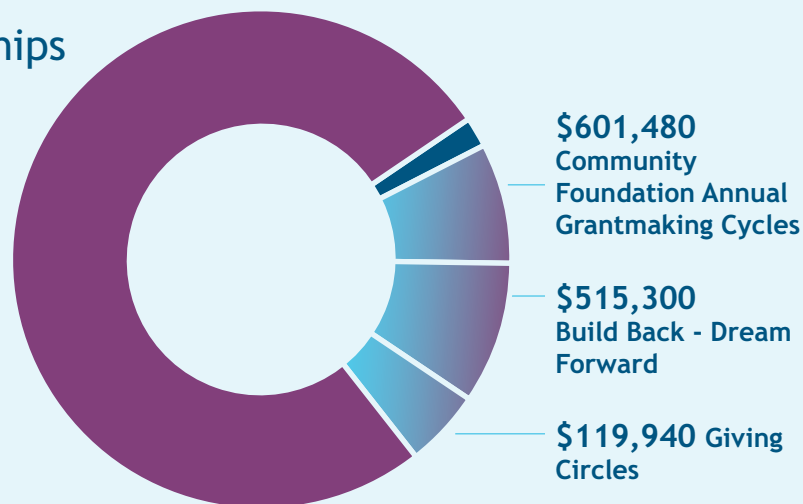
The Community Foundation is dedicated to leading and convening the community. The following initiatives comprised its community leadership work this year.

- Insight Region™
- Shape of the Region Conference
- Innovation Breakfast Series
- Raise the Region
- Build Back – Dream Forward
- Further Development of The Permanent Fund for Northern Virginia
- Door Opener Society for Professional Advisors
- Professional Advisors Network for Northern Virginia
- First Tuesdays
(Dialogue with Nonprofits)

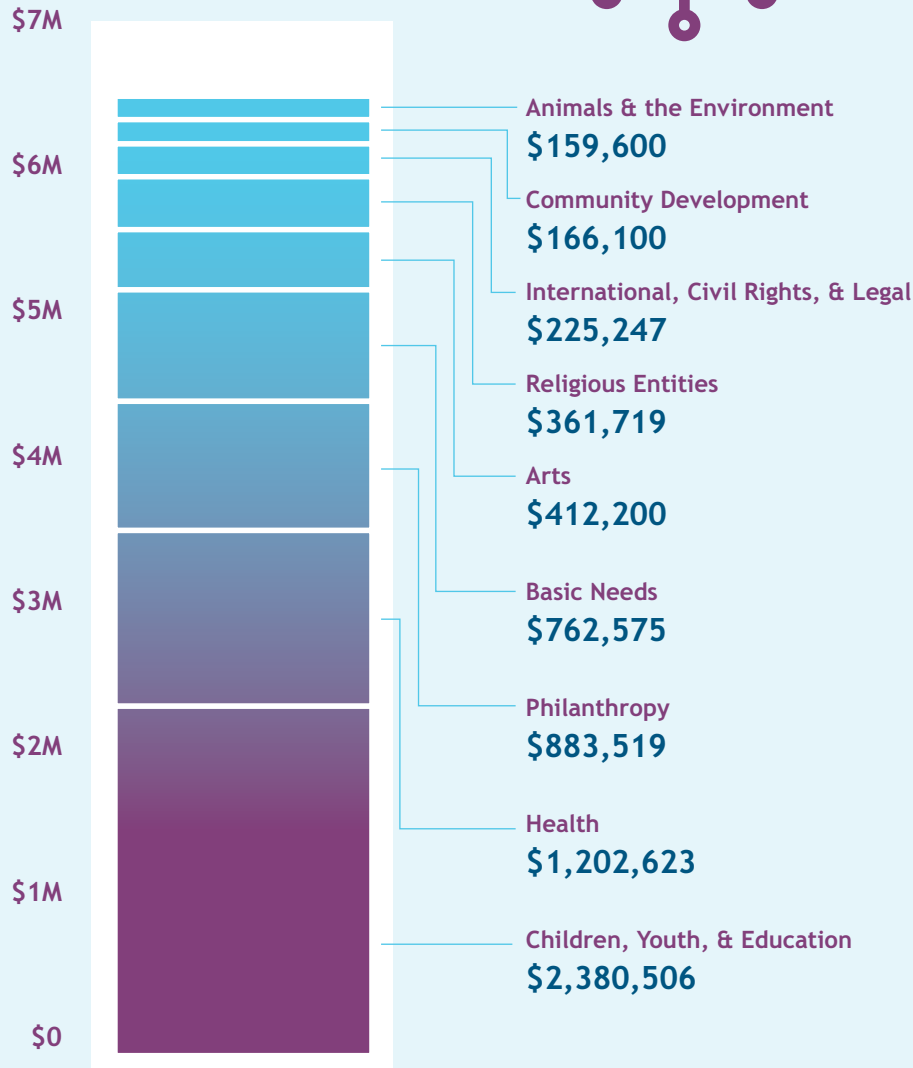
GRANTS & SCHOLARSHIPS

\$6,554,089
total grants & scholarships

- **\$5,003,513**
Donor Advised Fund Grants
- **\$313,856** Scholarships
98 Students
- **\$1,236,720**
Grants from discretionary funds and giving circles
92 Organizations



FUNDING BY AREA



Serving Arlington, Fairfax, Loudoun and Prince William counties, and the cities of Alexandria, Fairfax, Falls Church, Manassas and Manassas Park.

blueprint

FOR COMMUNITY LEADERSHIP

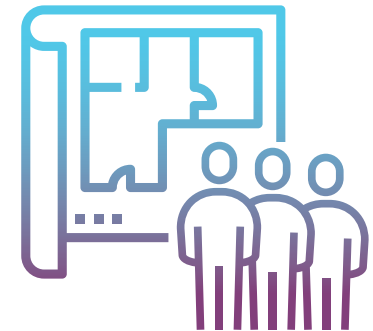
This year, the Community Foundation for Northern Virginia developed the Blueprint for Community Leadership as the design strategy for our community leadership role.

As Northern Virginia's economy has expanded over the years, so too have the levels of income inequality and racial wealth disparities. The pandemic further exposed and exacerbated these inequities, while the murder of George Floyd in May of 2020 made the call to address them ever more urgent.

Community leadership is a labor-intensive process. It is an entire suite of activities that helps the region define, and then act upon, the biggest challenges we face and the greatest opportunities we have. Community leadership means listening to and learning from community, raising awareness, analyzing and reporting on data, educating, convening, discussing, inspiring, and ultimately creating lasting change.

It is a proven strategy to elevate a whole community narrative for better, more impactful philanthropic investments.

The Blueprint for Community Leadership is informed by a rich organizational history spanning more than 40 years of partnership with the most critical nonprofits in the region. It is advised by our existing and expanding relationships with diverse community leaders who possess a deep understanding of what works and what doesn't work in their spheres of influence. And it is fed by the following four foundational pillars that support our vision of a community that works for everyone.





RACIAL JUSTICE AND EQUITY

Addressing systemic racism against people of color and recent immigrants



COMMUNITY RESILIENCE

Supporting programs and efforts that improve community resilience



INCLUSIVE ECONOMIC GROWTH

Creating accessible pathways to more inclusive economic growth



SOCIAL AND ECONOMIC MOBILITY

Promoting social and economic mobility for individuals and families



NEW CENTER FOR COMMUNITY RESEARCH insight region™

Launched in 2020, Insight Region™ is the Community Foundation's new Center for Community Research and a growing hub for reliable, well-researched, and actionable analysis of our region's greatest challenges and opportunities.

In 2021, Insight Region™ focused on *Inclusive Prosperity* with the goal of increasing self-sufficiency, expanding economic opportunity, and forging pathways for long-term movements out of poverty for all Northern Virginians.

INCLUSIVE PROSPERITY MEANS THAT, REGARDLESS OF INCOME, RACE, NATIVITY, OR FAMILY STRUCTURE...

... residents can afford to live here without public or private aid.

Unequal Burden, January 2021

We learned that lower-income households in our region had the **highest rate of severe housing burden in the entire country**—two-thirds spent over half of their income on housing.



... neighbors come together in support of their community.

Every Voice Counts, February 2021

We learned that **70 percent of hard-to-count households completed the 2020 Census in Northern Virginia**, a two-percentage point increase in 2010 participation levels at a time when rates were declining across the nation and in Virginia.

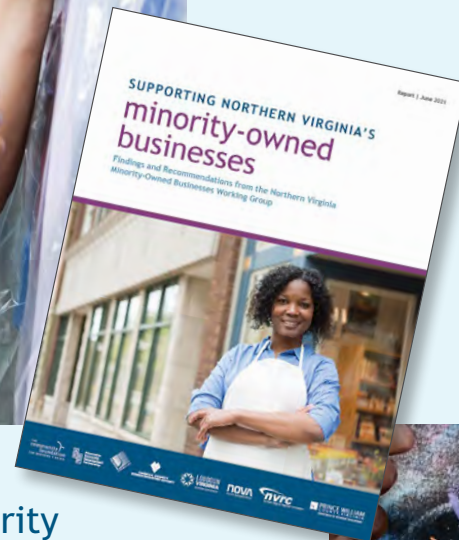




... entrepreneurs can start and grow a business.

Supporting Northern Virginia's Minority Owned Businesses, June 2021

We learned that Northern Virginia is home to an estimated 128,000 minority-owned businesses—42 percent of all establishments in the region—who represent a diverse cross section of residents and who faced unique risk during the pandemic.



This report was written by Elizabeth Hughes, Senior Director of Insight Region™, in partnership with members of the Northern Virginia Minority-Owned Businesses Working Group, which includes the Alexandria Economic Development Partnership, Arlington Economic Development, Community Foundation for Northern Virginia, Fairfax County Economic Development Authority, Loudoun Economic Development, Northern Virginia Economic Development Alliance, Northern Virginia Regional Commission, and Prince William County Department of Economic Development.

... children experience prosperity as adults.

Spreading the Wealth, May 2021

We learned that children raised in Northern Virginia in the 1980's-90's enjoyed the highest rate of economic mobility in the country.

These trends are likely to hold—based on seven opportunity factors that exert a causal effect on mobility—but today's children in lower-income families tend not to live in neighborhoods where those opportunities abound.



BUILD BACK - dream forward

A post COVID-19 event and investment initiative of the Community Foundation for Northern Virginia

The Community Foundation launched Build Back - Dream Forward in 2021 on the heels of our COVID-19 Response Fund. Given the disproportionate impacts of the virus on local immigrant communities and communities of color, the initiative focused exclusively on social and economic mobility, racial justice and equity, and inclusive systems of economic growth.

The Community Foundation hosted three separate conferences under the Build Back - Dream Forward banner in partnership with the business, government, and nonprofit sectors to elucidate these themes.



MODERATOR
Nancy Santiago
*Community Impact
Partnerships, Ureeka*

Build Back - Dream Forward: Virtual Town Hall

July 9, 2020

Our Virtual Town Hall was first in the region to both define and discuss the negative economic impact of the virus on minority businesses. Highlighting some alarming early data on business failures among Black and Brown owned businesses, Hispanic owned businesses, and Asian American Pacific Islander owned businesses, the event served to deepen our community's understanding of preexisting racial inequities in the financial and economic systems that were now causing drastic impacts for some, but not all, segments of our economy.



KEYNOTE
Melissa Bradley
Co-Founder, Ureeka

Supporting Minority-Owned Businesses

June 23, 2021

A seminal report by Insight Region™ titled "Supporting Northern Virginia's Minority-Owned Businesses" was the centerpiece of this convening. While focusing on the particular hardships faced by minority-owned businesses, we also learned for the first time that Northern Virginia was home to an estimated 128,000 minority owned businesses constituting a full 42% of all business establishments in the region. Panelists included representatives from the region's economic development authorities and from the Northern Virginia Regional Commission. Recommendations for shared solutions included the creation of more and better data around minority owned businesses for targeted outreach and support.

Panelists:

Corey Holeman, *Chairman, Northern Virginia Black Chamber of Commerce*

Hanh Le, *Executive Director, Weissberg Foundation*

Creston C. Lynch, Ph.D., *Associate Dean, University Life, George Mason University*

Michel Zajur, *Founder and CEO, Virginia Hispanic Chamber of Commerce*

Business NOT as Usual:

We Need More Capital, More Loans, More Equity for Black-Owned Businesses

December 3, 2020

This event was held in partnership with the Northern Virginia Black Chamber of Commerce and focused exclusively on the unique challenges of Black owned businesses. The keynote was given by Andre Perry of Brookings, who drew a direct data connection between a century of housing segregation and discrimination and the inability of Black business owners to successfully fund, launch, and sustain their early-stage businesses.

Banks Role in Servicing Black Owned Businesses:

B. Doyle Mitchel, Jr., *President and CEO, Industrial Bank*

Panelists:

Tshaka Cunningham, Ph.D., *Chief Science Officer, TruGenomix*

Carmen Felder, *Chair of Black Businesses Empowerment Committee, Loudoun Chamber and Founder of Authentic Connections PR & Business Management Firm*

Karlene Sinclair-Robinson, *Assistant Director, Business Finance Center, Community Business Partnership*

Stacie Yee, *Partner, Chief Diversity and Inclusion Officer, Pillsbury Winthrop Shaw Pittman LLP*



Data Presentation:

Elizabeth Hughes, *Community Foundation for Northern Virginia*

Jill Kaneff, *Northern Virginia Regional Commission*

Bobby Klancher, *Loudoun County Economic Development*

Stephen Tarditi, *Fairfax County Economic Development*

Panelists:

Buddy Rizer, *Loudoun Economic Development*

Clarice Grove, *Prince William County Economic Development*

Eileen Ellsworth, *Community Foundation for Northern Virginia*

Bob Lazaro, *Northern Virginia Regional Commission*

Tara Palacios, *Arlington Economic Development*


Jerry Sandford, *Alexandria Economic Development Partnership*

Business Owners:

Rhonda Barnes, *Your Third Eye LLC*

Jay Chandok, *StrategyUS LLC*

Niecia Bullock, *Rooted Yoga*



Through Build Back - Dream Forward, the Community Foundation awarded \$515,300 in grants to 21 organizations to support and stabilize small and minority-owned businesses throughout the region, address racial justice and economic parity, and continue to provide basic needs assistance to struggling individuals and families.

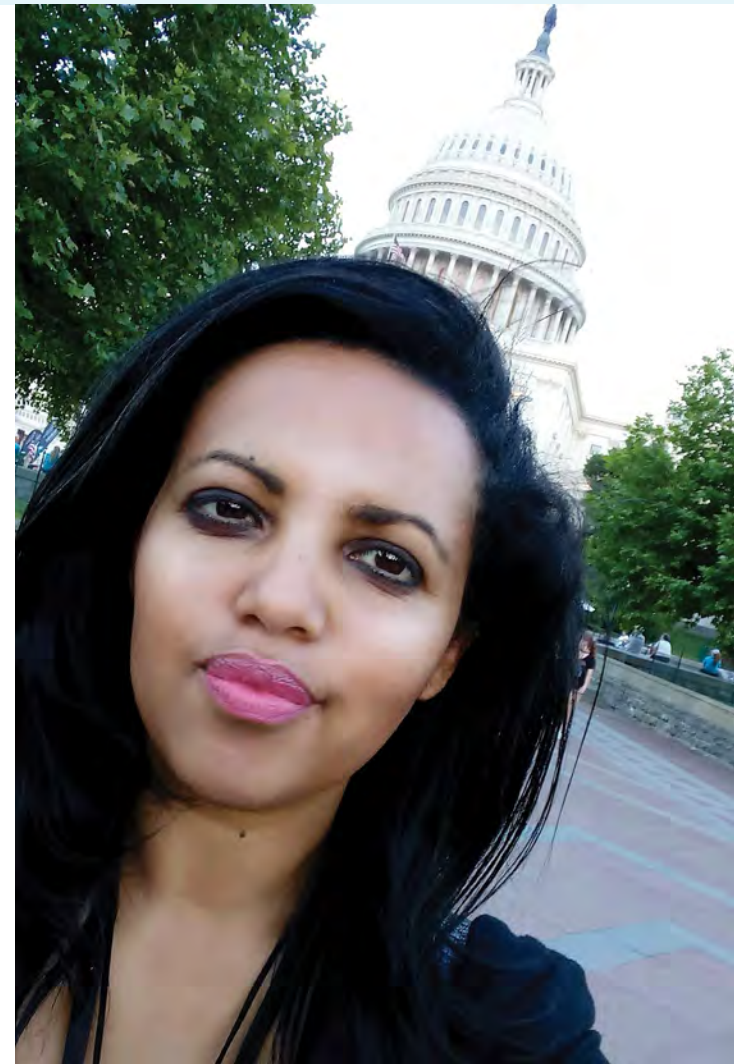
Here are examples of the impact from these investments.

Ureeka

Ureeka provides small businesses owners with coaching and mentorship from experienced professionals that helps them reach their organizational goals.

Recognizing that the pandemic has had a disproportionate economic impact on minority-owned businesses, the Community Foundation for Northern Virginia partnered with local economic development authorities to grant \$59,800 to Ureeka's FireUp initiative, which provides mentoring and coaching to small businesses, particularly those under minority ownership. Through this program, minority business owners like Marta Ali joined a network of entrepreneurs and received guidance on how to adapt their businesses to new challenges for continued growth.

Marta Ali Studios, owned and operated by Marta Ali, is an architectural design and fabrication firm, which uses innovative manufacturing processes to create materials for building projects that experienced pandemic-related business challenges. For instance, access to production facilities and supply chain resources became severely hampered. With the help of Ureeka's FireUp mentorship program, Ali reassessed her design and fabrication processes and has been shifting most production locally, which is an added benefit to our local economy. "Participating in Ureeka's FireUp program during the pandemic allowed me to reevaluate my company's business model in order to make it more robust and sustainable," Ali shared. "Continuing to engage with Ureeka's entrepreneur community is also valuable, providing access to amazing business leaders and nationwide experts who can serve as a sounding board when making critical business decisions."





Infant Toddler Family Day Care

Executive Director Wynne Busman leads Infant Toddler Family Day Care (ITFDC) in offering workforce development programs to minority and women-owned child care providers in Northern Virginia. Through IFTDC programs, each childcare provider is equipped with mentorship and training in child development, professionalism, skills to conduct interviews with clients and health and safety (nutrition, CPR/First Aid, Medication Administration Training). Each course incorporates English as a Second Language.

When the pandemic began, Busman saw that many of the child care providers were struggling to operate with new, unexpected challenges and were losing work, so she used the Build Back - Dream Forward grant to help them. “One provider let us know that without this funding her electricity was going to be turned off,” Busman shared. “For many others that remained open, we used grant funding to purchase masks and PPE and delivered them to the homes.”

ITFDC continues to provide training to child care providers and child care services to families in Northern Virginia during the pandemic. “Funding from the Build Back - Dream Forward grant helped our child care providers keep their businesses open so that they were able to continue to care for the children of essential workers as well as others in the community,” Busman said.



VOICE

James Pearlstein serves as Senior Organizer at Virginians Organized for Interfaith Community Engagement (VOICE), a non-profit dedicated to uniting people of different backgrounds in conversations to discuss local issues and create solutions. VOICE engages community members and helps facilitate desired outcomes as determined by those who are directly affected.

The Build Back - Dream Forward grant allowed VOICE to continue its work despite the pandemic, supporting further listening sessions among people of different backgrounds to address the sudden new challenges residents were facing. Pearlstein explained, “With the Community Foundation’s support, we played a major role to help usher in one of the stronger eviction moratoriums in the country at the state level. We fought for and won over \$80 million of rental relief money at the state level. While that fight is still ongoing, we think that it played a really important role in helping to keep vulnerable residents in their homes.”

events

AND CONVENINGS

Shape of the Region

Co-Creating a New Northern Virginia: An Emerging Vision of a More Inclusive, Sustainable, and Equitable Region

March 11, 2021

The Community Foundation's 2021 Shape of the Region conference was held on Thursday, March 11, 2021 in partnership with 12 regional organizations to inspire our community about ways our region is coming together to institute real change. The conference, which was attended by more than 300 guests, examined strategies for advancing a more inclusive economy in our region while facing some of the biggest challenges of our day – entrenched poverty, structural racism, and environmental sustainability.

Presenting Partners:

The Asian American Chamber of Commerce, George Mason University, Greater Reston Chamber of Commerce, Loudoun Chamber, Northern Virginia Black Chamber of Commerce, Northern Virginia Chamber of Commerce, Northern Virginia Community College, Northern Virginia Regional Commission, Northern Virginia Technology Council, and Virginia Hispanic Chamber



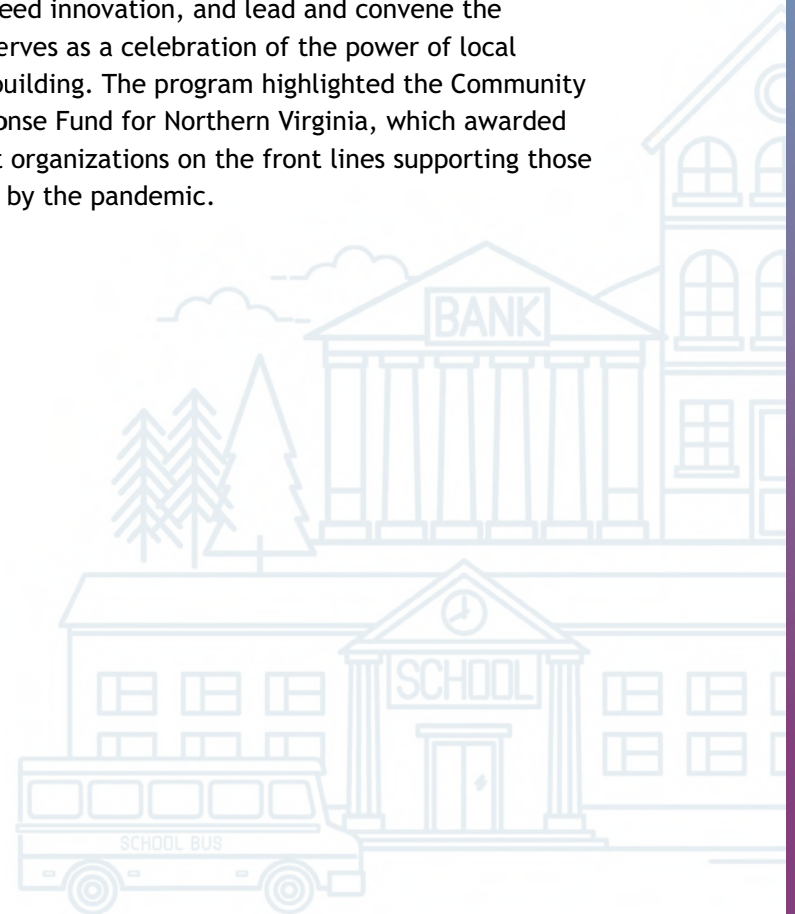
2020 Raise the Region

Building a Community that Works for Everyone

October 2, 2020

The Community Foundation's 2020 Raise the Region event was hosted by Leon Harris of NBC4 on Friday, October 2, 2020. Business, philanthropic, and community leaders joined from their own homes across the region and the nation to take part in this live-streamed event.

A mission critical fundraiser that supports the Community Foundation's ability to respond to need, seed innovation, and lead and convene the community, the event also serves as a celebration of the power of local philanthropy in community building. The program highlighted the Community Foundation's COVID-19 Response Fund for Northern Virginia, which awarded \$2.1 million to 110 nonprofit organizations on the front lines supporting those disproportionately impacted by the pandemic.



COMMUNITY investments

2020-2021 Discretionary Grant Impact

The Community Foundation for Northern Virginia awarded more than \$6.5 million in grants and scholarships during our fiscal year that ended June 30, 2021, including more than \$1.2 million in grants from our discretionary funds and from donor advised funds that the Community Foundation directly encouraged to help respond to need and seed innovation in Northern Virginia.

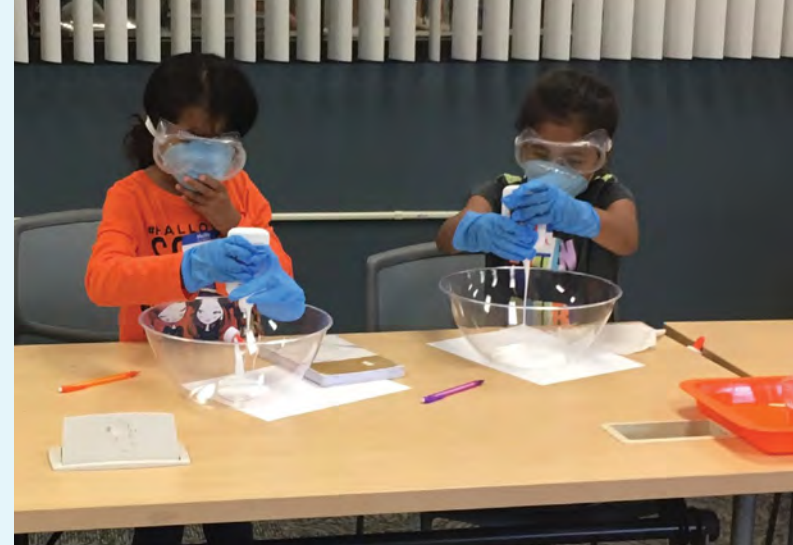
Here is a complete list of each grant that contributed to that total.



92
organizations



\$1,236,720
total amount
granted



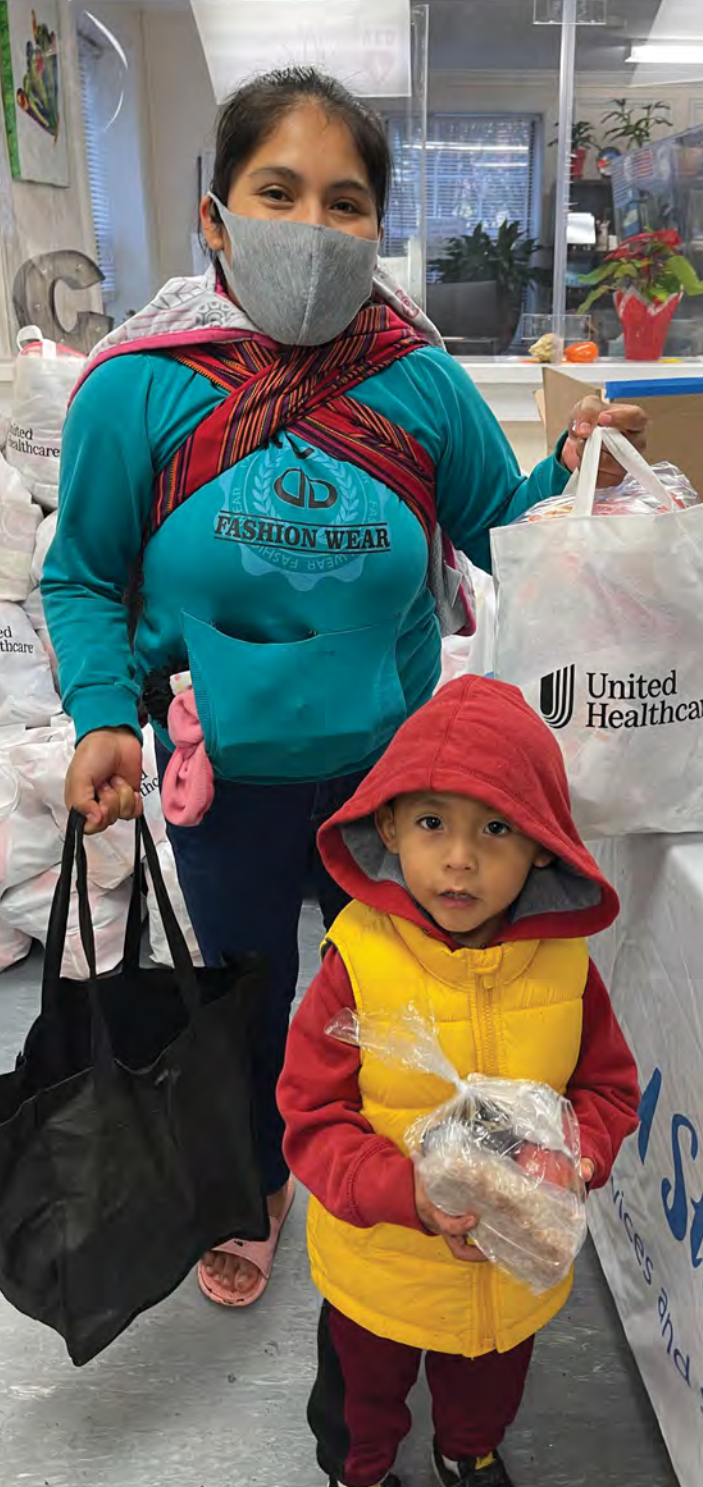
Above: Rosie Riveters, 2020 Business Women's Giving Circle Grantee

BUSINESS WOMEN'S GIVING CIRCLE

(\$60,000 | 5 grants)

The Business Women's Giving Circle supports programs and organizations in our region that promote business innovation, entrepreneurship, STEM education, and inventive opportunities for women and girls.

Children's Science Center, \$10,000
Rosie Riveters, \$20,000
Space of Her Own, \$10,000
The House, Inc., \$10,000
TrailsForYouth.org, \$10,000



COMMUNITY INVESTMENT FUNDS

(\$415,267 | 35 grants)

The Community Investment Funds are the signature grant cycle managed by the Community Foundation in which funds are invested in organizations serving the Northern Virginia community in the areas of child and youth development, education, mental health, aging, military personnel and their families, and poverty relief.

* Funding made possible by Haymarket Fund

+Funding made possible by the Huntsman Family Fund

Aging (\$17,181 | 1 grant)

Rebuilding Together Arlington/Fairfax/Falls Church Inc., \$17,181

Angus Slater Lamond Fund for Children and Youth (\$80,648 | 4 grants)

Communities in Schools of Northern Virginia, \$20,162
 Liberty's Promise, \$20,162
 Northern Virginia Family Service, \$20,162
 Northern Virginia Mediation Service, \$20,162

Left: Second Story, 2021 Community Investment Funds Grantee

Child and Youth Development (\$70,000 | 7 grants)

Alexandria Tutoring Consortium, \$10,000
 All Ages Read Together, \$10,000
 Bridges to Independence, \$10,000
 Girls on the Run of NOVA, \$10,000
 Higher Achievement, \$10,000
 National Inventors Hall of Fame*, \$10,000
 The House, Inc.*, \$10,000

Education (\$60,000 | 6 grants)

BEACON for Adult Literacy, \$10,000
 Generation Hope, \$10,000
 La Cocina, \$10,000
 Literacy Volunteers of America-Prince William, Inc.*, \$10,000
 The ARC of Northern Virginia, \$10,000
 Urban Alliance, \$10,000

*Community Investment Funds
(continued)*

**Mental Health
(\$30,000 | 2 grants)**

Nueva Vida, Inc., \$15,000
Pathway Homes, \$15,000

**Military Personnel & Their
Families
(\$35,000 | 2 grants)**

Easter Seals Greater Washington-Baltimore
Region, \$17,500
George Mason University Foundation, Inc.,
\$17,500

**Poverty Relief
(\$106,450 | 11 grants)**

Action in Community Through Service of
Prince William*, \$10,000
Britepaths, \$10,000
Carpenter's Shelter, \$10,000
Cornerstones, Inc., \$10,000
FACETS+, \$6,450
Fairfax Diapers, \$5,988
Friends of Guest House, \$10,000
Herndon-Reston FISH, Inc., \$10,000
Homestretch, Inc., \$10,000
Mobile Hope Loudoun, \$10,000
Offender Aid and Restoration of Arlington,
Inc., \$10,000
Project Mend-A-House*, \$10,000
Second Story, \$10,000



Above: Cornerstones, 2021 Community Investment Funds Grantee

**HEALTHY KIDS GRANTS
(\$10,212.83 | 6 grants)**

With support from the Chin Family Charitable Fund and the J.O.Y. Charitable Fund, two donor established funds with the Community Foundation, Healthy Kids Grants are made each year to individual public schools in Northern Virginia that implement a program or strategy to encourage better nutrition or more activity among their student body during the school year.

Alexandria City Public Schools, \$1,800
Bonnie Brae Elementary School, \$1,412.83
Gainesville Middle School, \$1,000

Kenmore Middle School PTA, \$2,000
Matthew Maury Elementary School /
Alexandria Public Schools, \$2,000
Westfield High School, \$2,000

BUILD BACK - DREAM FORWARD: COVID-19 RESPONSE FUND

(\$515,300 | 21 grants)

Build Back - Dream Forward was the Community Foundation's ongoing response to the COVID-19 pandemic in Northern Virginia. Grants were awarded to support and stabilize small and minority-owned businesses throughout the region, to address racial justice and economic parity, and to provide basic needs and emergency assistance to struggling individuals and families.

ALIVE!, \$25,000

Arlington Free Clinic, \$25,000

Asian American Chamber of Commerce Foundation, \$10,000

Capital Area Food Bank, \$25,000

George Mason University Foundation, Inc, \$25,000

Infant Toddler Family Day Care, \$200,000

Inside NOVA, \$12,500

Leadership Arlington, \$10,000

Leadership Fairfax, Inc., \$10,000

Leadership Prince William, \$10,000

Northern Virginia Black Chamber of Commerce Inc, \$10,000

NOVA International Business Foundation, \$6,500

Rising Hope United Methodist Mission Church, \$10,000

The House, Inc., \$25,000

Ureeka - ImpactAssets, \$59,800

Virginia Asian Foundation, \$6,500

Virginia Hispanic Chamber of Commerce Foundation, \$10,000

VOICE (Virginians Organized for Interfaith Community Engagement), \$10,000

Voluntary Action Center of Greater Prince William dba Volunteer Prince William, \$8,200

Volunteer Alexandria, \$7,000

Volunteer Fairfax, \$10,000



Right: 2021 Build Back - Dream Forward Grantee Volunteer Fairfax



Above: Audubon Naturalist Society, 2021 Environment Fund Grantee

ENVIRONMENT FUND

(\$36,000 | 2 grants)

The Environment Fund protects, restores, and improves the natural environment of Northern Virginia, thereby enhancing the health and quality of life of its citizens and the economy of the region.

Audubon Naturalist Society, \$26,000
NOVA Outside, \$10,000

GIVING CIRCLE OF HOPE

(\$45,000 | 3 grants)

The Giving Circle of HOPE creates positive change in Northern Virginia through engaged and collective philanthropy by directly benefiting people in need, where “need” refers to those who have low-income, are disadvantaged or are under-served.

Dulles South Food Pantry, \$15,000
Herndon-Reston FISH, Inc., \$15,000
The Culmore Clinic, \$15,000

INNOVATION FUND

(\$40,000 | 1 grant)

The Innovation Fund promotes inventiveness, creativity, and new design, seeding a more innovative ecosystem in the region.

The George Mason University Center for Innovation and Entrepreneurship, in support of its Project Food and Beverage program, \$40,000

LOUDOUN IMPACT FUND

(\$100,000+ | 12 grants)

The Loudoun Impact Fund is a giving circle of engaged Loudoun County donors managed in partnership by the Community Foundation for Loudoun and Northern Fauquier Counties and the Community Foundation for Northern Virginia. The Fund invests strategically in Loudoun County to promote education, the arts, the environment, and to support the needs of Loudoun families, children and youth.

+ The Community Foundation for Northern Virginia made a grant to the Community Foundation for Loudoun and Northern Fauquier Counties for \$14,940.37. The total above reflects combined funding from both organizations.

A Farm Less Ordinary, \$10,000

HealthWorks for Northern Virginia, \$7,685

INMED Partnerships for Children, \$10,000

Legacy Farms, \$10,000

Loudoun Abused Women's Shelter, \$10,000

Loudoun Hunger Relief, \$10,000

Loudoun Literacy Council, \$8,500

Mobile Hope Loudoun, \$5,000

Northern Virginia Family Service, \$5,000

Ryan Bartel Foundation, \$10,000

The Arc of Loudoun, \$5,000

Windy Hill Foundation, \$8,815



Above: Fairfax Symphony Orchestra, 2021
Ross-Roberts Fund for the Arts Grantee

ROSS-ROBERTS FUND FOR THE ARTS

(\$100,000 | 7 grants)

The Ross-Roberts Fund for the Arts celebrates, promotes, and supports the arts in Northern Virginia.

1st Stage, \$20,000

American Youth Philharmonic Orchestras,
\$10,000

Arlington Arts Center, \$10,000

ArtStream, \$20,000

Creative Cauldron, \$10,000

Fairfax Symphony Orchestra, \$20,000

Tinner Hill Heritage Foundation, \$10,000

scholarships

The Community Foundation now manages and administers thirty-six scholarship funds that support Northern Virginia students.

During the 2020-2021 school year, our funds awarded \$313,856 to 98 worthy students pursuing advanced degrees and skills based training in areas like STEM, medicine, health, computer science, cybersecurity, and education. Scholarship recipients were recognized for academic achievement, financial need, and good citizenship at school, at home, and in our greater community.

A full description of each scholarship fund's area of focus is available at www.cfnova.org/scholarships.



\$313,856
amount awarded



98
number of students
awarded



Alex Thomas Effort Award

Supports a Junior or Senior at James Madison High School and member of the Swim and Dive team. The Selection Committee seeks candidates that demonstrate dedication and a positive attitude and who is also a good mentor to younger students.

Lillyan Jacobs *University of South Carolina*

Anna M. Davison Scholarship

Supports graduating seniors of New Franklin High School in New Franklin, MO, who plan to pursue a degree in nursing.

Gavin Bishop *University of Missouri*

Ashworth Grogan Scholarship*

Supports high school seniors residing in Northern Virginia and college students at the Northern Virginia Community College advancing their education through the pursuit of an advanced certification or degree in the fields of education and health.

Christina Pelliccio *University of California, Berkeley*

Jennifer Rivera..... *NVCC*

Booz Allen Hamilton Vision Scholarship*

Supports five scholarships per year for four years for legal dependents of Booz Allen Hamilton employees. Awards are based on demonstrated superior academic achievement, character, and citizenship activities.

Lauren Bishop+ *Indiana University*

Nate Buchanan+ *Haverford College*

Kathleen Cannon+ *Duke University*

Irene Chen *Emory University*

Aarushi Dubey *University of Maryland*

Emily Huo+ *University of Virginia*

Hannah Jones+ *UNC - Chapel Hill*

Mark Joseph+ *Loyola Marymount University*

Luke Katzen+ *University of Virginia*

Sreya Mallipeddi+ *College of William and Mary*

Julia Noppenberger *Haverford College*

Jonas Ravich+ *Johns Hopkins University*

Megan Rossano+ *Wingate University*

Sachi Sakaniwa *University of Vermont,
Burlington*

Divya Shan+ *University of Virginia*

Shreya Shaw+ *The Ohio State University*

Jasmine Summers-Evans+ *UCLA*

Avery Watkins *Stanford University*

Chris Yang+ *Duke University*

Lucy Zheng+ *Duke University*

Cameron and Virginia Dye Scholarship*

Supports graduating seniors from Arlington County Public Schools. Awards are based on community or school activities/service, academic achievement and financial need.

Aaliyah Dade *Marymount Manhattan College*

Charles Homer Barton Memorial Scholarship*

Supports children of police officers in Fairfax and Loudoun Counties. Five scholarships are awarded each year.

Colby Bestick *College of William and Mary*

Joshua Brown *NVCC*

Joshua Hernandez *West Virginia University*

Carter Kinkead ... *Virginia Polytechnic Institute and
State University*

Sarah Milam *University of Virginia*



* Scholarship processes managed by the Community Foundation for Northern Virginia
+ Previous scholarship award winners with renewed support in 2020.

Elizabeth Koury Scholarship*

Supports graduating high school seniors with financial need who live in Northern Virginia, demonstrate academic excellence, and plan to pursue a career in medicine.

Vivian Cao-Dao *University of Virginia*
Isabella Drake+ *Occidental College*
Jaspreet Kaur+ *Virginia Commonwealth University*
Suferah Khan+ *George Mason University*
Vivek Khatri+ *University of Virginia*
Riya Maheshwari *Georgetown University*
Jesus Neyra+ *University of Virginia*
Anubhav Thapaliya+ *Virginia Commonwealth University*

Jackson Robert Greene Memorial Athletic Scholarship

Supports one female and one male varsity athlete from Herndon High School who could be “counted on” both on and off the field.

Camryn Renee Campbell *Virginia Polytechnic Institute and State University*
Jacob Lock Gelinas *PSU*

John Franklin Hiller Memorial Scholarship

Supports seniors at West Springfield High School who have demonstrated interest, skill and promise in the writing of poetry.

Valeria Hodge *Christopher Newport University*

Kathryn Louise Davison Scholarship

Supports a graduating senior from Mansfield High School in Mansfield, MA, who plans to major in English/communications or teaching.

Paige Peterson *Northeastern University*

Kelly Elizabeth Baker Memorial Scholarship

Supports a graduating senior from Middleburg Academy and a member of St. Mary of Sorrows Catholic Church/Knights of Columbus, Council 8600. Winners are selected based on artistic, scholastic, and spiritual development during the student’s senior year.

Mary Bohli *Franciscan University of Steubenville*

Leslie V. Forte Scholarship Fund*

Supports minority students attending the Northern Virginia Community College. Awards are made with consideration for academic achievement and demonstrated loyalty to NVCC through involvement in extra-curricular activities.

Yasmeen Zargarpur *George Washington University*

Louise Lightner Jamison Scholarship*

Supports high school seniors residing in Prince William County who plan to pursue an undergraduate degree in the field of education.

Lulya Habte *Virginia Polytechnic Institute and State University*

Michell Merhige Scholarship

Supports graduating seniors attending a Fairfax County public school who have overcome many personal obstacles and plan to pursue a college degree.

Khadeejatui-Khbraa Lawal .. *Virginia Polytechnic Institute and State University*

Samaha Mahboob *Virginia Polytechnic Institute and State University*

Reema J. Samaha Memorial Scholarship

Supports graduating seniors from Westfield High School in Chantilly or Herndon High School who will be attending a Virginia state university.

Anonymous

Lucilla Antwie *Virginia Commonwealth University*

Jacob (Yasha) Barth (Yantorski) *College of William and Mary*

Natalia Bowyer *Virginia Polytechnic Institute and State University*

Faith Cho *Virginia Commonwealth University*

Claire (Chun-Mei) de la Paz *University of Virginia*

Iris Nylund *University of Virginia*

Victoria Thomas *Virginia Polytechnic Institute and State University*

Reston Scholarship Fund

Supports graduating seniors from South Lakes High School in Reston with demonstrated financial need who will be attending accredited two- or four-year degree programs.

Anonymous	
Hadi Abdelhalim+	NVCC
Aamina Ahmad+	Stevenson
Alejandro Alvalos Alvarenga+	NVCC
Emeli Avalos Barillas	NVCC
Zayyan Budiman+	NVCC
Andrea Coca Ventura+	NVCC
Diseye-Ken Fiobotel+	Virginia Polytechnic Institute and State University
Mona Hassan	George Mason University
Sohale Hessavi+	NVCC
Abdi Hobor+	NVCC
Carla Jovel+	NVCC
Javaria Khattak	NVCC
Anisa Mahamed	NVCC
Abita Mahdi+	George Mason University
Pricilla Maradiago+	NVCC
Nayeli Martinez Mancía	NVCC
Nicol Salinas Perez	NCCC
Sharif Hamdi Feisal+	George Mason University
Tsiyon Wakjira+	NVCC
James Watkins	NVCC
Nia Winston	NVCC
Brenda Yanes+	NVCC

Rose Koury Scholarship*

Supports graduating high school seniors with financial need who live in Northern Virginia, demonstrate academic excellence, and plan to pursue a career in education.

Isabel Craun+	Liberty University
Eliana Glover	Roanoke College
Naim Gmati	Virginia Commonwealth University
Pateley Nichols+	Westmont College
Gina Nored+	Lipscomb University
Erin Poplin+	Miami University
Maira-Paula Proano+	George Mason University
Monica Tobaldo+	Radford University
Marissa Young+	Belmont Abbey College

Vance International, Inc. Scholarship*

Supports residents of Northern Virginia pursuing careers in law enforcement or security including the administration of justice.

Zoitos “John” Carayiannis	Belmont Abbey College
Michael Kyrychenko	Virginia Commonwealth University

Jacob Wilens-David Chu Memorial Scholarship Fund

Supports residents of the Bradley Farms Community in Oak Hill, VA who demonstrate the spirit of volunteerism and community spirit.

Rachel Mietlicki	Clarkson University
------------------	---------------------

William J. Foreman Memorial Scholarship

Supports graduating seniors of Fairfax County Public Schools who have overcome significant adversity with priority given to those who have experienced homelessness, were in foster care, and/or lacked substantial family support during their high school careers.

Ashley Beck	University of Virginia
Layma Kakar	George Mason University
Nia Winston	NVCC

Yuthud Oberdick Scholarship

Supports a graduating senior at Chantilly High School who demonstrates enthusiasm for learning, resiliency, integrity, and love of social studies.

Anonymous

Thanks to the following volunteers who served on committees to review grant and scholarship applications this year.

Allison (Allie) Allen	Laura Cudahy	Amy Frias	Joan Kasprowicz	Linda Odorisio	John Shul
Darlene Almanza	Scott Davis	Nehal Gandhi	Phyllis Kaye	Delali Osei Boateng	Maryn Simon
Kris Amundson	Anthony De Cristofaro	Peter Garry	Craig Kendall	Matt Paddock	David Smyre
Gaston Araoz	Jane Dealy	Erich Gerding	Suzanne Kim	Elizabeth Pan	Erika Soder
Kelly Auldridge	Alyssa DelMonaco	James Gillespie	Lisa Kinser	Dr. Sam Pappas	Aimee Stoddard
Karen Baer	Megan Dillard	Kelly Giniecki	Lieutenant Loriann LaBarca	Radha Patel	Marian Stone
Andrea Baker	Cleveland Dixon	Jamie Gloe	Celeste Land	Sunit Patel	Elaine Tholen
William Baker	Irene Dorr	Cat Godley	Joan Lee	Sangeeta Prasad	Marianne Thomas
Tom Bartlett	Ross Dowell	Laura Goodman	Tiffany T. Lee	Marianne Racca	Lyn Tomlinson
Jennifer Beach	Cindy Dwyer	Austen K. Greene	Lieutenant Rachel Levy	Roz Rakoff	Nina Toups
Alex Bednarek	Greg Early	Khristie Greiner	Leslie Lewis	James Redfield (Ret. FCPD)	Lloyd Tucker
Gil Blankespoor	Lauren Eckert	Mike Gutermuth	Natalie Lorenz	Kathy Renzetti	Corey Vaudo
Liz Blankespoor	Lieutenant Chris Edmunds	Kerin Hamel	Laurie Mangum	Catherine Ring	Pallas Washington
Frank Blechman	Deirdre Ehlen	Christy Hanlon	Latoya Marble	Stephen Roberts	Mitch Weintraub
Kristen Bobik	MacWilliams	Pat Hansen	Lieutenant Karen Maslona	Alice Robertson	Ali Wells
Faith Boettger	Amy Elledge	Martha Hill	Lianne Mason	Tricia Root	Donna Whitaker
Linda Bufano	Brandon Elledge	Judith Hingle	Ann Mazur	Teresa Rutledge	Laura Whitaker
Marilyn Bursch	Jesse Ellis	MaryAnne Hoadley	Jimie McClellan	Carolyn Ryan	Jeffrey Wilklow
Nancy Butterfield	Dr. Dennis Faludi	Vanessa Holloway	Susan McNeice	Susan Salvucci	Vickie Witkin
Stuart Carter	Pat Fege	Karen Huffman	Kurt Meinsen	Joe and Mona Samaha	Christie Worrell
Clem Castellano	Benton Fisher	Ken Huntsman	Dan Mihalko	Michelle Sawicky	
Linda Chadwick	Joan Fisher	Dawn Hyman	James Miller	Caitlyn Saxton	
Aileen Christian	Howard Foard	Ret. Captain John Isom	Brenda Moore	Matt Scoble	
Joe Clement	Andrew Foos	Sara Jaffe	Maggie Moreland	Nile Shaikh	
Toni Clemons-Porter	James Franklin	Jennifer Jameson	Elizabeth Murphy	Cyndi Shanahan	
Marie Colturi	Jina Freiberg	Rebecca Michelle Johnson	Susan Nolan	Nicole Shaw	
Jane Consolla	Brad Frey	Tina Karidoyanes		Ben Shroeder	
Patricia Cornell					
Gary Cabbage					

permanent fund

FOR NORTHERN VIRGINIA

An Endowment to Shape the Region's Future

The Permanent Fund for Northern Virginia is a permanent community endowment that will help shape the future of the region. The Community Foundation works with donors wishing to leave lasting legacies for future generations of Northern Virginians to grow this forever source of funding for our community.

The Permanent Fund stands at \$20.1 million in current gifts and bequests. Interest from all current gifts are supporting the Community Foundation's annual discretionary grant cycles, ensuring our growing ability to respond to need and seed innovation.

Below is a complete list of funds that comprise the Permanent Fund for Northern Virginia.

Abrahams Fund for Children and Youth
Aging Fund
Angus Slater Lamond Fund for Children and Youth
Child and Youth Development Fund
Community Foundation for Northern Virginia Operating Endowment
DeSanto Family Legacy Fund Education Fund
Elledge Family Fund
Ellsworth Weil Family Fund for Northern Virginia
Emergency Relief Fund
Environment Fund
Healthy Kids Fund

Huntsman Family Fund Innovation Fund
John and Patti Sinnen Charitable Legacy Fund
Melinda Merk Fund for Animal Welfare
Mental Health Fund
Military Personnel and Their Families Fund
Mustafa Family Legacy Fund
Nancy Eberhardt Fund for Innovative Social Solutions
Northern Virginia Children's Fund
Pillai Family Fund
Poverty Relief Fund
Racial Justice and Equity Fund for Northern Virginia

Schott/Murray Family Fund for Northern Virginia
Shahnaz M. Ahmed Endowed Fund for Northern Virginia
The Gilbert Family Fund for Northern Virginia
The Janey Calhoun Family Legacy Fund
The Permanent Fund for Northern Virginia
The Ross-Roberts Fund for the Arts
von Bostel Family Charitable Fund
William A. & Helen C. Steinacker Fund
Wolff Family Legacy Fund

DONOR FEATURE



"I learned of the Permanent Fund for Northern Virginia through my attorney and financial advisor when discussing my estate planning. I knew I wanted to donate part of my estate to locally impactful causes, particularly in the fields I care about most deeply – the environment and women's initiatives. The Community Foundation team engaged me as a volunteer grants committee member of its Environment Fund. I see firsthand the impact of the awards to nonprofits designing smart growth strategies, helping to preserve green space and protecting the region's watershed particularly as the population density in the region increases. I also look forward to becoming engaged in the Business Women's Giving Circle to work alongside women who are helping to support girls and young women in our region. By leaving a bequest to the Permanent Fund for Northern Virginia in these fields, I am leaving a legacy for future generations and helping maintain the region as an attractive place to live and work. Over the last year and a half, the Community Foundation has become an important part of my life."

- Leslie Lewis, Permanent Fund Donor

2020-2021

funds

AT THE COMMUNITY FOUNDATION

The Community Foundation holds 247 Funds that support the philanthropy of the donors who establish them. Grants to nonprofit organizations in this region, throughout the United States, and even abroad are awarded from their funds at the donors' recommendations. Donors have also helped establish permanent community endowments from which the Community Foundation awards grants to support the most critical needs of the region and to seed innovative solutions now and for future generations.

Below is a comprehensive list of all funds held at the Community Foundation.

Donor Advised Funds

1,000 Aspirations Fund
ABLE Fund
Adler Family Fund
Alan M. and Nathalie P. Voorhees Fund
Alicia E. Pfund Fund
Appleby Fund
Atholton Donor Advised Gift Fund
Avalon Charitable Fund
Babbitt Charitable Fund
Basha Family Fund
Bob and Connie Harding Charitable Fund
Brown Family Charitable Fund
Caimi-Markis Family Fund
Carolyn Reid Kohn and James Christopher Kohn Charitable Fund

Catherine and J. Hamilton Lambert Fund for Northern Virginia
Chapel Family Foundation Fund
Chin Family Charitable Fund
Chris Chester Charitable Fund
Christine and David Etue Charitable Fund
Claude Moore Charitable Foundation Donor Advised Fund
COATH Fund
Crossing Way Fund
Cuadros Family Fund
Dan R. Bannister Short-Term Advised Fund
David and Amy Bosserman Charitable Fund
Deborah Traficante Charitable Fund
Delman Family Charitable Fund
Denkler Family Charitable Fund
DeSanto Family Charitable Fund

DONOR FEATURE

“The Community Foundation for Northern Virginia (CFNOVA) has been an invaluable partner helping with our charitable giving ever since we got introduced to them last year. With the wide reach they provide to a variety of charities – local, national and international – we have found CFNOVA to be a very convenient one-stop hub for channeling grants from our donor advised fund to support causes about which our family cares deeply. They have an exemplary group of dedicated staff who are a pleasure to work with. We look forward to years of fruitful and productive collaboration with CFNOVA.”

- Krishnan and Geetha Chandrasekhar, advisors of the Krishnan Chandrasekhar and Geetha Chandrasekhar Family Fund



Dewberry Family Charitable Fund
Edward Kussy Charitable Fund
Ellen S. Flanagan Memorial Fund
Eloise T. Nishida Philanthropy Fund
End Cancer Fund
Farnum Family Charitable Fund
Franks Family Fund
Gail & Robert Shor Advised Fund
Gilbert Family Charitable Fund
Glass-Royal Charitable Fund
Gorrell Family Charitable Fund
Gregory M. Denkler Memorial Fund
Griffin Owens Foundation Fund
H. M. Ball Jr. Family Endowment Fund
Hamond-Ziff Charitable Fund
Hannah Wilklow Fund
Hanson Donor Advised Fund
Harriet Hulings Donor Advised Fund
Haspel Family Fund
Haymarket Charitable Fund
Hazel's Fund
Henry-Phillips Family Fund
Hoernig Family Fund
Hunt Family Fund
Intrepid Fund
Irene and Annie Rose Fund
J.O.Y. Charitable Fund
James I. Chatman Fund
Jay O'Connor Fund for Youth Soccer
Jean and Bruce Wyman Short-Term Advised Fund
Jean-Paul and Lisa Martin Family Fund
Jeffrey Virostek Fund
Jill and Brian Corrigan Charitable Fund
John and Nina Toups Charitable Fund
Just Plain Science Fund
K. Paul Singh Charitable Fund

Kara Foster-Bey Suicide Prevention Memorial Fund
Katherine and Jeffery Barnett Charitable Fund
Kathleen Haley Hannan Memorial Fund
Kendrick Family Charitable Fund
Kipps Family Charitable Fund
Krishnan Chandrasekhar and Geetha Chandrasekhar Family Fund
Learning Tree Farms Adventures In Learning Fund
LeVan-Robinson Fund
Lighthouse Fund
Low-Carbon Future Fund
Mahrer Family Fund
Mangum Family Fund
Mark C. Wilson Memorial Fund
Mary Karen Read Memorial Endowment Fund
McNair Family Charitable Fund
Michael S. Rusciolelli Memorial Endowment Fund
Mike Freeland Charitable Fund
Milton J. and G. Ronald Herd Charitable Fund
Milton Thiel Family Fund
Mosher Family Fund
Motivated for Mav SCN8A Epilepsy Fund
MOTSTA Fund
Mustafa Family Charitable Fund
Neena and Suresh Shenoy Family Fund
Nolan Family Charitable Fund
Northern Passages Fund
Nova Fund
Novelli Apol Charitable Fund
Prasad Family Foundation
Pringle Family Charitable Fund
Rachel Harrell Memorial Fund
Riddell and Vitale Family Charitable Fund
Robert and Teresa Brown Fund
Robert Welsh Children's Fund
Roberts Family Foundation Fund

Rosa and Art McGonigal Fund
Rosewood Fund
Roux Family Fund
S. Scott Stewart Charitable Fund
Safeer Blaustein Hargrove Endowment Fund
Schweitzer Family Charitable Fund
Shy and Jean Greenspan Fund
Stevens Family Charitable Fund
Stillman Family Charitable Fund
Sue Goetz Ross and Stephen S. Roberts Music Fund
Susan Moore Stuntz Charitable Fund
Susan S. Stewart Charitable Fund
Tena's Light Fund
The Burmester Family Endowment for People with Developmental Disabilities
The Grymes Fund
The J. Watkins Endowment for the Arts and Education Fund
The Jakel Fund
The Jessica Leigh Siwek Memorial Fund
The JOY Fund
The Michele Harrison "Surviving Survivors" Cancer Fund
The Orchard Fund
The PSG Fund
The Rebecca A. & J. Gregory Crowne Fund
The Reynolds Family Charitable Fund
The Sydalco Charitable Fund
The Tovey Weiss Family Fund
The Warner Family Charitable Advised Fund
The Washington Group Special Care Foundation Fund
Thomas G. Jewell Fund
Travis and Beth Good Family Charitable Fund
Travis Evans Memorial Fund
Tyler Joe Young Memorial Fund
United Bank Community Fund

FUNDS AT THE COMMUNITY FOUNDATION

Waters Family Charitable Fund
William S. Cohen & Janet Langhart Cohen Charitable Fund
Wilson Family Charitable Fund
Wolff Family Charitable Fund
XMS Donor Advised Fund
Yellow Rose Fund
Yolonda Pajot Memorial Fund for Ovarian Cancer
Young Family Charitable Fund
Zachary Heuple Memorial Foundation Fund

Committee Advised Funds

Bruins in Action Fund
Latino Engagement and Achievement Fund
Making a Difference / Kathy Hwang Memorial Fund
The Angels Network Fund

Designated Funds

Alfred T. Souder Fund
All Ages Read Together Fund
Break the Cycle Designated Fund
Carducci Educational Endowment Fund
Celebrate Fairfax Education Fund
Diving With Heroes
Elaine Avington Griffin Unsung Educators Designated Fund
Gulledge Fund
Jack E. Aalseth Fund
Jane Ann Gunter Designated Fund
Jody Steenland Memorial Scholarship Fund
John Karickhoff, M.D. Charitable Fund
Leslie Prokop Memorial Fund
Nicholas C. Kirven Freedom is Not Free Fund
NOVA Parks Endowment for Temple Hall Farm Regional Park
NOVA Parks Fund

The 1863 Fund
The Janice Lynn Delaval Designated Fund for Animal Welfare
The Reston Chorale Endowment Fund

Field of Interest Funds

Build Back - Dream Forward: COVID-19 Response Fund for Northern Virginia
Kaiser Permanente Northern Virginia Social Health Impact Fund
Micron Opportunity Fund
Our Children Fund
Sanbrailo Trust Field of Interest Fund

Fiscal Sponsorships

EduTutorVA Fund
Fairfax County Computer Clubhouse Fiscal Sponsorship
NOVA Parks Outdoor Kids Fund
Plant NOVA Natives Fund

Giving Circle Funds

Business Women's Giving Circle
Giving Circle of HOPE
Loudoun Impact Fund

Funds that Comprise the Permanent Fund

Abrahams Fund for Children and Youth Aging Fund
Angus Slater Lamond Fund for Children and Youth Child and Youth Development Fund
Community Foundation for Northern Virginia Operating Endowment
DeSanto Family Legacy Fund
Education Fund
Elledge Family Fund

Ellsworth Weil Family Fund for Northern Virginia
Emergency Relief Fund
Environment Fund
Healthy Kids Fund
Huntsman Family Fund
Innovation Fund
John and Patti Sinnen Charitable Legacy Fund
Melinda Merk Fund for Animal Welfare
Mental Health Fund
Military Personnel and Their Families Fund
Mustafa Family Legacy Fund
Nancy Eberhardt Fund for Innovative Social Solutions
Northern Virginia Children's Fund
Pillai Family Fund
Poverty Relief Fund
Racial Justice and Equity Fund for Northern Virginia
Schott/Murray Family Fund for Northern Virginia
Shahnaz M. Ahmed Endowed Fund for Northern Virginia
The Gilbert Family Fund for Northern Virginia
The Janey Calhoun Family Legacy Fund
The Permanent Fund for Northern Virginia
The Ross-Roberts Fund for the Arts
von Bostel Family Charitable Fund
William A. & Helen C. Steinacker Fund
Wolff Family Legacy Fund

Scholarship Funds

Alex Thomas Effort Award Fund
Amin Family Scholarship Fund
AMS Opportunity Scholarship Fund
Ashworth Grogan Scholarship Fund
Barbara Cornwell Memorial Scholarship Fund
Bentley Family Scholarship Fund
Booz Allen Hamilton Vision Scholarship Fund

(Scholarship Funds continued)

Cameron and Virginia Dye Scholarship Fund
Celebrate Cherie Scholarship Fund
Charles Homer Barton Scholarship Fund
christopher consultants Civil Engineering
Scholarship Fund
Elizabeth Koury Scholarship Fund
Grace Brettle Memorial Fund
Jackson Robert Greene Memorial Athletic
Scholarship Fund
Jacob Wilens-David Chu Memorial Scholarship Fund
John Borden Memorial Scholarship Fund
John Franklin Hiller Memorial Fund
Kelly E. Baker Memorial Scholarship Fund
Leslie Richardson Memorial Swan and Sparrow
Scholarship Fund
Leslie V. Forte Scholarship Fund
Louise Lightner Jamison Teacher Scholarship Fund
Michell Merhige Scholarship Fund
Miss Aranetta Memorial Scholarship Fund
Northern Virginia First Responders Scholarship Fund
NVTC Foundation Kilberg Scholarship Fund
Reema J. Samaha Memorial Scholarship Fund
Reston Scholarship Fund
Reston Scholarship Fund Endowment
Robert Spencer Smith Memorial Scholarship Fund
Rose Koury Scholarship Fund
The Anna M. Davison Scholarship & Kathryn Louise
Davison Scholarship Fund
The Intermarkets-Lucido Journalism Scholarship
Fund
The Jackie Fassinger Rossell Scholarship
Vance International, Inc. Scholarship Fund
William J. Foreman Memorial Scholarship Fund
Woody Marshall Memorial Scholarship Fund
Yuthud Oberdick Scholarship Fund

FOUNDATION supporters

DONORS FROM JULY 1, 2020 TO JUNE 30, 2021

Julie Aamoth
Stephanie Abbott
Edward Abrahams
Kate Abrahams
Tony Abreu
DiAndra Adams
Laura Adler
Aerojet Rocketdyne
Cares
Mary Agee
Nedra and Peter Agnew
Ahlgrimm Family
Charitable Fund
Shahnaz Ahmed
Kristy Akers
David Albo
Chad Aldeman
Alexandria
Small Business
Development Center
Carey Alford
Arwa Ali
Rhian Allvin
Amazon Smile
Bhavna Ambalavanan
America's Charities
Kristen Amundson

Marinda Anderson
Scott Anderson
Cindy Andreotti and
John Tupper
John Andrews
Teagan Andrews
Anonymous
Grace Anton
Joseph Arangio
Hannah Armah
Kiana Arnold
Brian Ashby
Carol Ashworth
Shannon Finch Athey
Audubon Naturalist
Society
Audubon Naturalist
Society of the
Central Atlantic
States, Inc.
Kelly Auldridge
Courtney Ayers
Ayr Hill Garden Club
Jill and Bruce Bach
Baird Foundation, Inc.
Angela Baker
Bill and Andrea Baker

Sarah Baker
Whitney Bakke
Paul Baldino
William Ball
Toyosi Banjo
Leslie Banks
Edward Baranoski
Laurie Barber
Shihki Barcheck
Susan Bardenhagen
Kathryn Bardsley
Steven Barham
Phil Baroody
George and Diane Barr
Pete Barr
Michael Barretta
Roger Bartlett
Bridget Basilico
George and Ellan
Batavick
Michael Battaglia
Kalen Bauman
Sebastian Baytan
BB&T Wealth
Management
Robin Beasley

Tamara Beckstrand
Kristin Beene
Yamuna Behara
Bell Textron Inc.
Judith Bello
Theresa Benincasa
The Honorable
Elizabeth Bennett-
Parker
Keith Bentley
Joe Berg
Arthur Bergh
Carol Berman
Edward Berman
Amanda Bessette
Michelle Betoni
Christie Bettwy
Don and Megan Beyer
Sonya Bible
Howard Bierman
Pamela Binninger
Biogas Researchers,
Inc.
Crystal Birnie
Blackbaud Giving Fund
Laurie Blackburn

FOUNDATION SUPPORTERS

Katie Blackman	Mille Bradley	Capital Services Inc.	Kenyetta Chinwe	Cordia Partners	Melissa Denkler
Amber Blaha	Travis Brannigan	Capitol Financial Consultants	Adam Chmara	Cathi Coridan	Gayle Dennis
Lourdes Blanco	David Brannon	Lori Carbonneau	Jennifer Cho	Cornerstones, Inc.	Mark Destler
Juliet Blankespoor	Jessica Braxton	Mary Carlson	Sang Choi	Brandon Cosby	Brittany Dewberry
Kevin & Lisa Blankespoor	Hannah Brenneman	Rosanne Carluccio	Sid Chowdhary	County of Fairfax, Virginia	Kevin Dezfulian
Liz and Gil Blankespoor	Brighton Jones	Ray and Joyce Carman	Christopher Consultants LTD	County of Loudoun, Virginia	Arlindo Dias III
Kelly Blanks	Arturo Brillmbourg	Joshua Carpenter	Jason Chung	Patrick Cox	Glendon and Michelle Diehl
Anne Blas	Ed Brimberg	Joyce Carr	Timothy Cirillo	Cerasela Cristei	Victoria Dietz
Andrew Blasko	Caroline Brinsley-Kyle	Mary Carr	Rebecca Clar	Carmen Critchlow	Joseph DiGangi
John Bleiweis	Grace Broderick	Rosario Angie Carrera	Clark Construction Group, LLC	John & Peg Cross	Ian Dillner
Dennis Bloomquist	James Brooks	Anita Carter	Angelina Clark	Gary Roberto Cuadros	Elena Dinman
Eric Bloomquist	Anne Brosnan	Gregg Carter	Gordon Clay	Gary Cubbage	Theresa Dinman
Mike and Christine Bloomquist	Brown Advisory	Stephanie Carver	Pat Clayton	Cumberland Trust	Marissa DiPaolo
Shirley Bloomquist	David Brown	Deborah Casey	Ann Cochran	Madelyn Cummins	Sarah Diriye
Dr. and Mrs. Blowers	Lou and Wendy Brown	Dawn Cassel	The Cockrell Family	Janet and David Curtis	Mary Beth and Thomas M. Divincenzo
Kristen Bobik	Margaret Brown	Cassidy & Associates	Jillian Cohen	Maia Curtis	Dobre Investments LLC
Boeing	Tony and Monica Brown	Susan and Lewis Cassidy	Steven Cohen	Kristin Daigle	Janis Dodson
Faith and John Boettger	Buchanan Partners	CATHEXIS	Daniel Cohn and Lynn Brinton	Sabato D'Alessio	Elizabeth Doherty
Donna Bolton	Deborah Buck	Riza Cebula	Thomas Colby	Jen Dalton	Tom Donegan
Jennifer Bonadio	Ethan Burgos	Chelsea Cerwinski	Catherine Colglazier	Joel Dandrea	Luciano Dos Santos Goncalves
Eric and Wendy Booma	Elisha Burke	Wanda Chambers	Kim Collins Gilby	Michael Daniel	Kee Dotson
Booz Allen Hamilton	Mary Burton	Charise Champagne	Combined Federal Campaign	Emily Daniels	Dovel Technologies, Inc.
Alexandra de Borchgrave	Timothy Burton	Shannon Champion	Community Foundation for Loudoun and Northern Fauquier Counties	Tony and Nancy Daniels	Jennifer Downs
Lou Borghi	TK Burton	Geetha Chandrasekhar	Rita Comstock	Rehema Daniels	Heather Drach
Julie Borneman	Kathleen Busch	Krishnan and Geetha Chandrasekhar	Peter Conklin	Amy Darbonne	Jill Drensky
Karen Botkin	Mark Butler	Jose Chaparro	Jeffrey Connelly	Amy Darger-Stewart	Desire' Dubose
Anita Bourzutschky	Jeff Cabaniss	Alia Chapman	Barbara Conner	Meagan Darlington	Stephanie Ducker
Kristina J Bouweiri	Christa Caceres	Evelyn Chapman- Campbell	Jean Consolla	Neela Das	Ann Dudley
Gary & Jill Boward	Tiffany & Carlos Caceres	Charities Aid Foundation of America	Randy Cooper	Mimi Dash	Louise and Earl Dudley
Matt Boward	CALIBRE	Gina Chaszar	Will Corbin	Jon Davis	Lisa Dugan
April Boyd	Audrey Calloway	Tiffanie Chaudang	Leslie Corbus	Nanette Davis	Dunn Charitable Fund
Karen Boyd	Camelot Garden Club	Nina Chawla	Hanni Cordes	Betsy Davison	Leslie Dupree-Culman
Peg Boyne	Micahel Campagna	Jamie Chen		Patricia Dekkers	Karen DuVal
Bernie Bradley	Lynnwood Campbell	Sue Chin		Angie Delboy	Susan Dykstra
Michelle Bradley	Kathryn Campbell			Deliee Family	Krista Eaton
	Gwyn Cannon			Deloitte Services	
	David Cantor				
	Capital One				

Nancy Eberhardt	Bryn Favakeh	Adria Foster	William and Donalda Gibson	Kristine Griswold	Harris Family Foundation
ECMC Foundation	Barbara Favola	Jacquelyn Fox-Good	Paul and Laura Gilbert	Patrick W. Gross	Greg Harris
Gillian Economou	John Fedor	HD Foy	Doug Gilchrist	Jeffrey Grossman	Daniel Harrison
Jim Egenrieder	Allison Feierabend	Cheryl and Elliot Francke	Eileen Gillis	R. Jerry and Jackie Grossman	Patricia Harrison
Karen Ehrenworth	Sheila Ferguson	Reid Frankhauser	Robin Givhan	Curtis Groves	Pearl Hartley
Brandon and Amy Elledge	Danielle Ferguson-Macklin	John Frantz	GlaxoSmithKline Foundation	Charlie Grymes and Catherine Ring	Michael and Joan Hartogs
Eileen Ellsworth and Bob Weil	Suzanne Feurt	Joshua Frazier	Fred Glazier	John Guerry	Abe Haspel
Ashraf Elshoush	Matthew Finarelli	Steve Freckmann	Virginia Glenn	Pattie Gunter	Deepak Hathiramani
Andrew and Kristin Emery	Mary Finley	Freddie Mac	Veronica Glennon	Anuj Gupta	Tamara Hatley
Louis Emery	Robin Finnell	Michael Freeland	Kelly Glessner	Luanne and Michael Gutermyth	Haynesworth Family Fund
Patricia Eng	Charles and Pattie Firestone	Jenna Friede	Leslie Gleue	Chul Gwon	Mel Hefty
Max Englert	John Fischer	Friends of the Occoquan (FOTO)	Jamie Gloe	Hacken-Maestri Charitable Fund	Mr. Philip Robert Heim and Dr. Cary Rita Mountjoy
Elan Enriquez	Benton and Joan Fisher	Cate Fulkerson	Nancy Glynn	Arthur Hall	Elizabeth J. Heiston
Beth Erickson	Margaret Fisher	Virginia Fulton	Aaron Gobler	Sue Hall-Erickson	Madeline Helbraun
Gregory Ericson	Robert Fisher	Conor Furey	Zak Goldwasser	Christopher and Faith C. Ham	Lisa Henrickson
Debbie Eshelman	Shannon Fisher	Hope Galley	Golick Sokol Family Fund	Judy Hamby	Matt Herrmann
Jeanette Essig	Kelly Fitzgerald	Rick Galliher	Naomi Goodly	Amy Hammer	Patricia Herrmann
John Estes	Sara Fitzgerald	Kari Galloway and Paul Stern	Mary Goodwin	Carrie Hammer	Jeff Hewitt
Monica Shane Estrella	James Flaherty	Marialuisa Gallozzi	Sarita Gopal	Gianni Hammond	Nellie Hiebert
David and Christine Etue	Patrick Flaherty	David Garcia	Elizabeth Gore	Hamond Family Foundation	Cheryl Hill
Calvin and Evelyn Evans	Erika Flanigan	Kyle Garman	John Warren Gorrell and Catherine Rice Gorrell	Jeff Hamond and Mauri Ziff	Marion Hiller
Michelle Evans	Aaron Fleisher	Kelly Garrity	Joshua Gotbaum	Pat Harkins	Paula Hillery
Marrit Eyassu	David Fleming	Gary & Lorenne Schlaffer	Joan Gottlieb	Dick Harless	Carolyn Hills
James Fagan	FlexProfessionals, LLC	Charitable Giving Fund	Marguerite Gourlay	Richard Harless	Dixie Hines
Eric N. Fagerholm	Dalene Florez	Tom Gately	Jim Gowen	Richard Harpe	Kevin Hirschfeld
Fairfax Memorial Funeral Home	Michael Fontaine	Patty Gehring	Casey Gragg	Marie Harrell	Mary Ann Hoadley
Suzanne Fajer	Scott Fontaine	Debra Gellert	Megan Grant	Robert and Alison Harrell	Chris Hobbs
Kathryn Falk	Sharon Forbes	George Mason University School of Business	Alexis Grason	Rodney Harrell	Kurt Hoffman
Arietta Family	Alan Ford	Jennifer Gerasimas	Greater Washington Community Foundation	Tracy Harrington	Patrick and Wilma Hogan
Lourenco Family	Charles Foreman	Ishani Ghosh	Stephen Greene		Cathy Hogendobler
Price Family	Louise and Mark Foreman	David Giachetti	Cary Greenspan		Holland & Knight LLP
Kriparam Faraday	Bruce & Bonnie Forster	Jennifer Giancola	Kathleen Grillo		Mike Holleran
Rick and Karen Farris	Whitney Forstner	Jennifer Gibli			Ian Holley

FOUNDATION SUPPORTERS

Londa Holloway	Interstate Family of Companies	Riley Jordan	Bobbie and Bill Kilberg	Dori Anne Kuchinsky	Chinyelu Lee
Patricia Hopson	Wojtek Isanski	Shannon Judd	Jae and Deb Kim	Jim Kuhn	Tom Lee
Patricia Horoho	ITS Maryland Inc. (Intelligent Transportation Society of Maryland)	Megan Judt	Seon-Doh Kim	Ashwini Kumar	Judith Lelchook-Lohman
Dorie Hottinger	Mary Jackson	Dave & Maisi Julian	The Kimmel Family	Sean Kumar	Anne LeMay
Sarah Hover	Rebecca Jackson	so jung	Hank Kinsley	Kevin Kuntz	Christopher Lemon
Andrea Howe	Jessica Jacob	Cynthia Kacer	Aaron and Anna Kinworthy	Anil Kurian	Jim Lemon
Michael Howson	Brian Jacoby and Betsy Davison	Jeanne Kadet	Samantha Kinzer	Linda Kuriloff	Jon Lentz
Balazs Hubai	Samarah Jahangir	Kaiser Permanente	Robert and Pamela Kipps	Edward Kussy	Paul and Julia Leslie
David Hubbard	Elana Jakel	Jim Kalitowski	KippsDeSanto & Co.	Zachary Kwon	Monroe and Rosalie Lesser
Gail Hubbard	Renne Jakobs	Taylor Kamhong	Michael Kitchen	Hudson and Tanya LaForce	Matthew Levan and Lindsay Robinson
Marlissa Hudson	Karen James	Raghuraman Kanchi	Kathleen Kittrick	Sandra Laeser	Canice Levin
Valerie Huelsman	Hana Jandova	Jeremy Kapinos	Harry Klaff	Donald LaFave	Leonard Levine
Caroline Hughes	Cheryl Janey and Michael Calhoun	Phyllis Kaplan	Nancy & Jeffrey Klain	Cheryl Lai	Ted Lewis
Lisa Hughes	Eric Janle	Thomas Kaplan	Helena Klumpp	Michael Lai	Maurice Lheureux
Jerry Hulick	Lore Jarrett	Nicole Karlebach	Brian Knapp	Lake Thoreau Entertainment Association	Amber Li
Nina Hull	Jason Howell Company	Jerome Karnick	Knights of Columbus Council 8600	J. Hamilton Lambert	Zhiyuan Li
Human Capital Strategic Consultants	Jeane Dixon Children to Children Foundation	Joan Kasprowicz	Rae Ann Knopf	Celeste Land and Kent Giles	Therese Liebermann
Ted and Karyn Hume	Lauren Jenkins	Diana and Michael Katz	Scott Knudsen	Eric Lantz	Syaru Shirley Lin
Phil Hummelt	Andrea Jensen	Arden Kaywin	Christian S. Knudsen	Edward and Patricia Lara	Roy Litland
Jason Humphries	Helen Jester	Basel Kayyali	Deborah Koehle	Paul Largent	Scott Lock
Truman and Sandra Hunt	Pedro Jimenez	Kinga Kazmierczak	Myong Soon Koh	Tanya Larriva	Elizabeth Lodal
Brooke Huntington	Kathy Johnson	Bill Keen	Wayne and Cynthia Kokta	Brittney Larsen	Kirsten Lodal
Ken and Marci Huntsman	Kelly and Steve Johnson	Molly Keeter	Puneeth Ranjan Komaragiri	Marie Rangel Larson	Barbara Long
Nancy Hwa	William Johnson	Dawn Gourlay Kelley	Holly Kortright	Elizabeth Lasher	Bobbi Longworth
Nancy Hwa	Scott Johnston	Joanne Kelly	Sherry Kost	Judy Laufman	David and Virginia Looges
Hyland Giving Fund	Ron Johnstone	Kathleen Kelly	Sam and Donna Kountoupes	Tracy Laughlin	Dan Loper
Ann Hyslop	Debra Jones	Jennifer Kenyon	Kowalski Family Foundation	Carson Lavinder	Luisa Lopez Borovsky
V Lakimova	Renee Jones	Kemba Kessee	Lisa Kowalski	Frederick Lawson	Marisa Lopez Rivera
Hamayon Ibrahim	Tracy Jones	William Kettering	Jane Kramer	Lisa Leathwood	Margaret Lorber
Vinu Ilakkuvan and Senthil Sockalingam	Greta Jones-Williams	Shaun Khalfan	Michelle Krisel	Scot LeBolt	Natalie Lorenz-Anderson
Nancy Imhof	Nasit Jongkittipong	Naheed Khandekar	Sara Krumm	James Ledbetter	Martha Lovejoy
John & Donna Imhoff		Josh Khaykin		Laura Lederer	Vicki Lovins
Karen Inglett		Caren Khoo			Alison Lovitt-Reinfeld
Inland Private Capital Corporation		Robin Kidd			Sebastian Lu
Inova Health Foundation		Robin and Susan Kidd			
		Amanda Blauvelt Kiefer			

Ernest Lucier	April May	Susan McPartlin	Mission Focused Consulting	Shreyas Nama Shankar	Bruce Oliver
David Lunter	Gregory Maynard	Michael McRae	Tracy Mitchell	Navy Federal Credit Union	Mike and Lois Olson
Alison Lynn	Marilyn Mazer	Ann McShea	John Moberly	Diedra Ndiaye	One4All Charitable Fund
Kristin Mackert	Patricia McCall	John McTyre	Robert Mobley	John Neer	James Oppy
Janet Parsons Mackey	McCandlish Lillard	Karen McWilliams, Esq.	Angela Molina	Susan Nelson	Beth Oravec
Laurie MacNamara	Brendan McCann	Margaret Meath	Brian and Holly Monday	Network For Good	Barbara O'Reilly
Jimmy Macrae	Shelby McCarthy	David Medinets	Monument Wealth Management	Jackie Neumann	Richard O'Rourke
Marie Madson	Dan McClain	Victor Meleski	Cheryl Moody	Son Nguyen	Scott Oslick
Marcy Mager	Patrese McClain	Albert Meloy	Pamela N. Moody	Haily Nguyen	Molly Osterried
Morgan Mager	Laurie McCreedy	Huijuan Meng	Ilryong Moon	Loann Nguyen	Carlos Otal
Katie Maiberger	Phil McCreedy	Jeff Menzin	Osama Morad	Cathy Nichols	Beth Otal
Jason Maier	Ryan McCreedy	Richard Merhige	Elizabeth Morales	Glenn Nocerito	Julia Ott
Jay Maier	Genie McCreery	Melinda Merk	Michael Morano	Susan Nolan	Joy Outten
Major Family Foundation	Mrs. Edward S. McCullough	Loki and Rose Merkel	Donna Morea	Martin Noretsky	Chip Paciulli
Tom Maldrie	Socheth McCutcheon	Ronalda Meson	Morrisette Family Foundation	Northern Virginia Regional Park Authority	Joseph Paciulli
Sean Mallon	Elizabeth McDonald	Kim Meyers	Rich Morrow	Northern Virginia Technology Council	Jean-Louis Pajot
Donald Mann	Carol McFate	Michael and Laura Faino	Ari Morse	Jeff Novak	Rajin Palani
Ben Maphis	Kari McGahey Garcia	Micron Technology Foundation, Inc.	Carol Muhammad	Roger and Leslie Nucho	Beena and Dinesh Pandey
Jonathan Marashlian	Janice McGeehan	Micron Technology, Inc.	Kathleen Mullen	Franklin Nutter	Orin Panning
Margaret Goss's Fund at the Renaissance Charitable Foundation	Trish McGill	Steve Milazzo	Sherifah Munis	John Oakes	Trevor Pantin
Marginot Family Fund	Shalene Mcguiney	Chris Miller	Daniel Murphy	Kara Oakleaf	Jonah Paransky
Wendy Marquez, Wize Solutions, LLC	Joan McIntyre	Douglas Miller	Kathryn Murphy	Lisabeth Occhialino	Daniel Park
Lisa Martin	Ronna McKenna	Harris Miller	Mark Murphy	Christina O'Connell	Grace Park
John and Lana Martindale	Alison McKenzie	Janice Miller	Robyn Murphy	Craig O'Connor	Becky Parker
Michael Mason	Frank McKeown	Jennifer Miller	Sheila Murphy	Kelly O'Connor	Lloyd and Tanaia Parker
Nia Mathis	McLean Hamlet Garden Club	John Miller	Patrick Murray	Odin, Feldman & Pittleman, PC	Lyon Parker
Harriet Matsushima	McLean Rotary Club Foundation	Katrina, Pat, & Tim Miller	Bernard and Daphne Mustafa	Susan O'Donnell	Wood and Emelie Parker
Matthew and Barbara Black Fund	Rachel McLean	Kristi Miller	Stephen Mutty	Linda Odorisio and Tim Cirillo	Sunit Patel
Deborah Matthews	Shirley McLellan	Pat Miller	MVB Bank Inc.	Lynley Ogilvie	Mildred Patterson
Allen Matusow	Marvin McManus	Becky Miller	Ken Myers	Lindsey OKeefe	RT Paullin
Melody Maven and Gisele Jackson	Beatriz McNelly	Robert Miller	Tara Nadel	Paul Olenyn	John Peabody
	Deborah McNicholas	Elaine Mills	Dennis Nalli		Kristie Pearmund
	Bella McPadden	Udit Minocha			Jennifer Pelzman
					Tracy Penn
					Marjorie Pennington
					Mike Pennington

FOUNDATION SUPPORTERS

Chris and Stacie Perry	David and Charlene Pritzker	Giovanni Rinaldi	Lucinda Kennedy Ryan	Karrie Schweikert	Ann Smith
Emily Perry	Therese Pung	Shantella Rios	Leslie Rye and John Coleman	Kathleen Sciarappa	Donn S. Smith
Jon Peterson	Linda Purl	Alison Rivard	Johnny Sadoff	Mitchell Seipt	Dr. and Mrs. Doug Smith
Debra Wolfington Pettus	Dr. Delia Racines	Lynda Robb	Stephanie Sager	Ivan Selin	Eileen Smith
Alicia Pfund	Lisa Rader	Julia Robbins	Dianne Salva	Seneca Ridge Unified Mental Health Team	Isabel Smith
Michael Philadelphia	Rakoff Charitable Fund	Dean Roberts	Rodrigo Salvaterra	Christine Sennott	Margaret Smith
Piper Phillips Caswell	Joy Ramos	Stephen Roberts	Jennifer Salvo	David and Betsy Sensenig	Tony Smith
PHILLIPS Programs	Nancy Ramsey	Edward Robichaud	Jill Samuels	Carl Settlemyer	Susan Snell
Gregory Phillips	Jonathan Ramsfelder	Allison and Brian Robinson	Jerry Samuelson	Timothy and Julie Shaheen	Michelle and Olivia Snow
Robert Phipps	Rare Bird Coffee Roasters, LLC	Brian Robinson	Daniel Sanders	Dr. Carol Shapiro Morgan	Don Snyder
Sharon Pietzyk	Sari Raskin	Wendy Robinson	Yolanda Sanders	David Sharon	Senthil Sockalingam
Meera and Shankar Pillai	Anne Reagan	Rock Spring Congregational United Church of Christ	Nikhita Reddy Sanikommu	Scott Shefferman	Patrick Soleymani
James Pillow	Judy Redpath	Alizanette Rodriguez	Sara Santner	Yiqing Shen	Daniel Solomon
Pillsbury Winthrop Shaw Pittman LLP	Sophie Reed	Janet Romanchyk	Stephen and Mary Sapp	Anna Sherlock	Mark Soltys
Frank and Kathleen Pisch	Barbara Rehm	Gregory Romano	Victoria Sarkisian	Home Shmunis	South Riding Nurseries LLC
Tony Pizzifred	Brent Reidenbach	Alisa Romero	Beth Sasfai	Shue Jen Chuang, DDS & David W. Lucht DDS, PLC	Barbara Southworth
Alicia Plerhoples	Alyssa Reiner	Mark Roncoli	Saslaw Interfaith Communities for Dialogue	Dee Piecuch Siebert	Patricia Sparrell
PNC Foundation	David Reines	Edwin Rood	Eleanor Saslaw	Sierra Club (Potomac River Group)	George Spears
Andrea Podoff	Michael Reiter	Nancy Rooney and Dave Anderson	Jennifer Saslaw	Stefanie Zeldin Sigal	Cindy Speas
Michele Pohlmann	Kathy Renzetti	Sherri Rosenbert	Kaiti Saunders	Byron Siliezar	Erin Spence
Greg Poland	Teresa Ressegue	Naomi H Rosenblatt	Andrea Scarbrough	Alicia Silva	Karen Speroni
Paul Poletes	Rudolph Reyes	Kristin Rosenthal	William Schaffer	Greg and Julie Simmons	John Sponski
Charles Polinger	Rezon8 Angels Group	Phillip Rosenthal	Jack Schein	K. Paul Singh	Smrithi Srikanthan
Susan Popkin	Joan Richards	Mark Ross	Brian & Brooke Schermerhorn	Jay Sinha	Jidtree Sripunya
Courtney Porter	Marie Richards	Rich Ross	Monica Schillan	Denise Sisson	Katy Stalcup
Joseph Post	Lee Richardson	Charles Rossotti	Nanci Schimizzi	Joseph Skapars	Jason Stanford
Bruce Potter	Paul Richardson	Loretta Rowe	Jean Schiro-Zavela and Vance Zavela	Kerry Skinner	David Stanton
Ram and Sangeeta Prasad	Diana Richman	Andrew Rowland	Edward Schmitz	Elaine Skurnick	Stacy Stathopoulos
Sangeeta Prasad	Tracy Rickard	Mary Rubeiz	Marie Schneider	Robert Slevin	Donna Steele
Lowell Pratt	Marie Ridder	Regina Rubeo	Catherine Schott Murray	Nancy Slusher	Lori Sterne
Amie Price	Michelle Rief	Alicia Russman	Beth Schroeder	Scott Small	Steve Gladis Leadership Partners
Jeff price	Herbert Riggs	Meghean Rustia	Schwab Charitable	Amy Smith	John Stevens
Principle Choice Solutions, LLC	Emily Riley	Anthony Ryan			Douglas Stewart
Barbara Pringle	James Riley	Barbara Ryan			Sherri Stewart
	Meghan Riley				Elisabeth Stigall

Josh and Merrimon Stillman	The Compass Group, Inc.	Karen Tovey and Edward Weiss	Ronald and Agnes Virostek	Robert Williams	Nilda Yadao
Susan Stillman	The LifeCentre - Leesburg Veterinary Specialists Blanchfield	Elizabeth Train	Donna Jean Vitalie	Tonya Williams	Rich Yalen
Andrea Stinnett	The Ludwig Family Foundation	Elizabeth Trangsrud	Lydia Vivian	Jennifer Williamson	Michelle Yarborough
Barbara Stober	The Mather	Transurban Inc.	VLP Financial Advisors	Kisa Willis	Yates Campbell & Hoeg LLP
Deborah Stokes	The Morris and Gwendolyn Cafritz Foundation	James Traylor	Julia Waddell	Leona Willis	Susan Yurchak
Anne Stone	The PNC Financial Services Group	Kathleen Tremblay	Kari Waldack	Jeff Wilson	Zeldin Family Foundation
Janice Stoodley	The Reston Chorale	Truist	Katharine Wanderer	Rick and Kerrie Wilson	Layne Zimmerman
Thomas Strat	The Winston-Salem Foundation	Erin Tulk	Jenny Wang	Michelle Wilson	Mitzi and Jim Zimmerman
Christine Straub	Connie Theroux	Ericka Turk-Moore	Sang Wang	Steven Wilson	Scott Zivic
Sullivan, Bruyette, Speros & Blayney, Inc.	Elaine Tholen	The Honorable Michael Turner	Ye Wang	Tessie and Bill Wilson	Betsy Zolper
Ann Summerson, CFP with The Wise Investor Group	Gregory and Marianne Thomas	Jill Turosz	Jean Warnick	Amy Windisch	
Jeff Sun	John Thomas	Barbara Tuset	Washington Gas	Linda Winger	
Christie Sunday	Regina Thomas	Douglas Tyson	CeCe Waters	Sarah Winn	
Willis Sutter	Karen Thompson	Thomas Udlock	Shannon Watt	Joe Wintsch	
Ali Swee	T.E. Thompson	Johanna Unger	WB20	Jill and Marc Wishkoff	
Michael Synge	Alice Thorne	United Daughters of the Confederacy - Loudoun Chapter 170	Wealthspire Advisors	Wize Solutions, LLC	
Jessica Tadlock Beasley	Heather Thornton	Swapna Uppala	Judith Webdale	John Woelfel	
Tannia Talento	Susan Tillotson	Nathalia Uquillas	Webster Family Fund	John Wolff	
Jeffrey Tarbert	Timothy and Carol Blauvelt	Kayla Urban	Maya Weil	Katherine, Vicki, Adrian, and Graham Wolfington	
Taylor Family Charitable Giving Account	Janine Marie Tobias	Maria Van Ness	Caleb Weintraub	Edward Kelly Wolynech	
Jennifer Taylor	Randy Toll Jones	Margaret Vanderhye	Jerry & Jan Weis	Samantha Wong	
Jim Taylor	Michael Toohey	Michelle Vanderloo	Melissa Weise	Woo Soo Choi and Sae Hyun Yoon	
Melissa Teates	Haywood Torrence	Katherine Vandyke	Helaine Weissman and Mike Benoudiz	Desiree Woodard	
Bill Tepe & NBIS Team	Albert Torzilli	Vanguard Charitable	Aubrey Wesser	Tina Woodard	
Dan Tepstein	J.J. Totaro	Erika Vaughn	Lynn Westine	Dorothy Woodcock	
The Anderson Company	Greg Touchton	John Veilleux	Tracey Whaley	Betty Wooldridge	
The Andreotti Group, LLC	Nina Touns	Velsor Properties, LLC	Doug Wheeler	Robert Wooldridge	
The Blackthorn Foundation		Stuart Venzke	Donna and Thomas Whitaker	Steve and Stephanie Wright	
The Claude Moore Charitable Foundation		Verizon	White House Natives, LLC	Bruce and Jean Wyman	
		Carlos Vicente	Rosalind White	Chekeim Wymes	
		Sue Vinci	Margaret Whitehead	Michael Wynne	
		Brian Virostek	Lisa Williams	Melissa Yadao	

financials

NORTHERN VIRGINIA COMMUNITY FOUNDATION STATEMENT OF FINANCIAL POSITION

Fiscal Year Ended June 30, 2021

Assets	2021	2020
Cash and Cash Equivalents	1,015,409	1,027,288
Investments, at Fair Value	87,981,246	69,941,695
Furniture and Equipment, Net	12,453	18,153
Other Assets	54,945	59,269
Pledges Receivable	10,480	25,700
TOTAL ASSETS	89,074,533	71,072,105
Liabilities and Net Assets		
Accounts Payable and Accrued Expenses	106,683	115,841
Deferred Revenue	95,135	41,300
Paycheck Protection Program Loan	0	131,761
TOTAL LIABILITIES	201,818	288,902
Net Assets		
Without Donor Restrictions	82,602,908	65,293,393
With Donor Restrictions	6,269,807	5,489,810
TOTAL NET ASSETS	88,872,715	70,783,203
TOTAL LIABILITIES AND NET ASSETS	89,074,533	71,072,105

Revenue and Support	2021	2020
Contributions	8,309,153	10,178,478
Gala Income	455,958	572,535
Donated Facilities and Administrative Support	12,874	14,753
Fee Income	818,886	709,080
Earnings on Investments	16,593,238	1,876,415
Other Income	201,748	53,014
TOTAL REVENUE AND SUPPORT	26,391,857	13,404,275
Expenses		
Program services	7,350,621	13,795,153
Support services:		
Fundraising	464,469	572,834
Management and general	487,255	462,031
Transfer of fund balance	0	0
TOTAL EXPENSES	8,302,345	14,830,018
Change in Net Assets	18,089,512	(1,425,743)
NET ASSETS, BEGINNING OF PERIOD	70,783,203	72,208,946
NET ASSETS, END OF PERIOD	88,872,715	70,783,203



THE
community
foundation
FOR NORTHERN VIRGINIA

2940 Hunter Mill Road, Suite 201 | Oakton, VA 22124 | 703.879.7640

www.cfnova.org



Excellence. Accountability. Impact.™

Confirmed in Compliance
with National Standards for
U.S. Community Foundations



#28727